

# THE CHAMPLAIN

4 OR 5  
BEDROOM

1,758 SQ. FT. INCLUDES 248 SQ. FT. PARTIALLY FINISHED BASEMENT  
2,721 SQ. FT. INCLUDES 1,211 SQ. FT. FULLY FINISHED BASEMENT



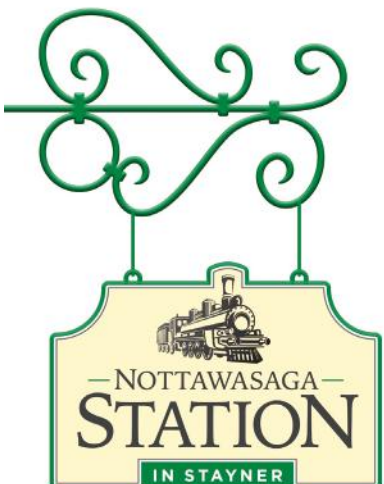
Elevation B - 1,758 - 2,721 sq. ft.



Elevation A - 1,758 - 2,721 sq. ft.



Elevation C - 1,758 - 2,721 sq. ft.



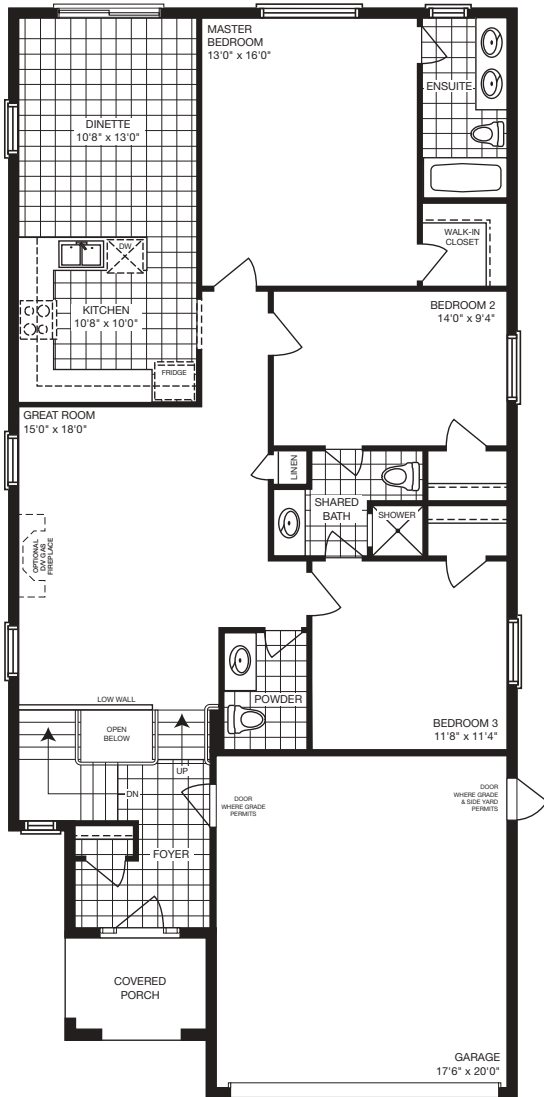
[MyNextStop.ca](http://MyNextStop.ca)



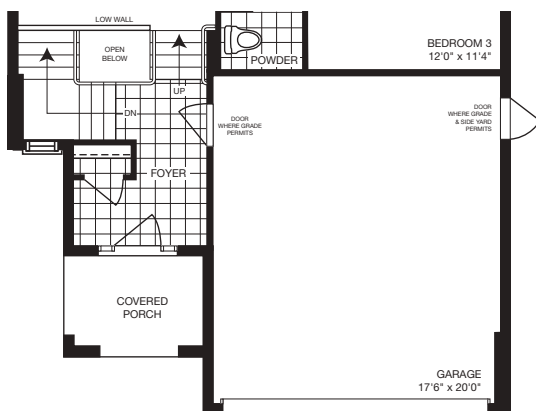
# THE CHAMPLAIN

4 OR 5  
BEDROOM

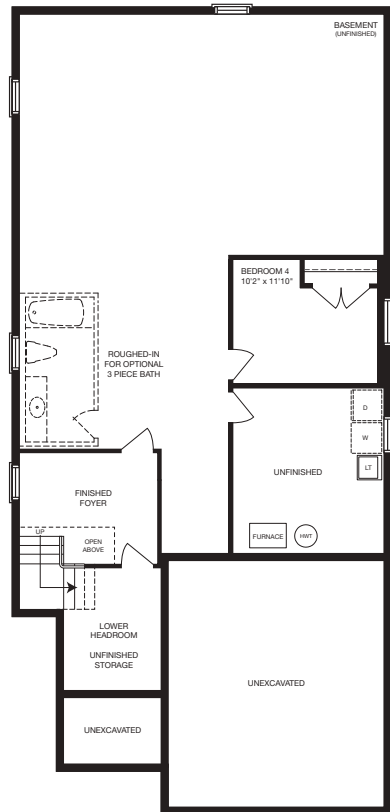
1,758 SQ. FT. INCLUDES 248 SQ. FT. PARTIALLY FINISHED BASEMENT  
2,721 SQ. FT. INCLUDES 1,211 SQ. FT. FULLY FINISHED BASEMENT



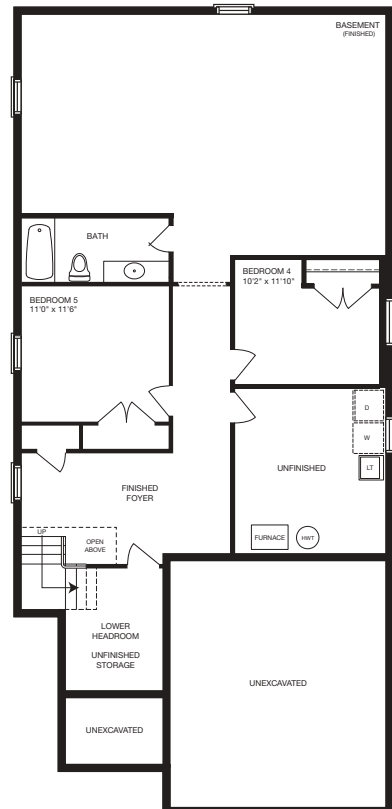
MAIN FLOOR  
Elevation A & B



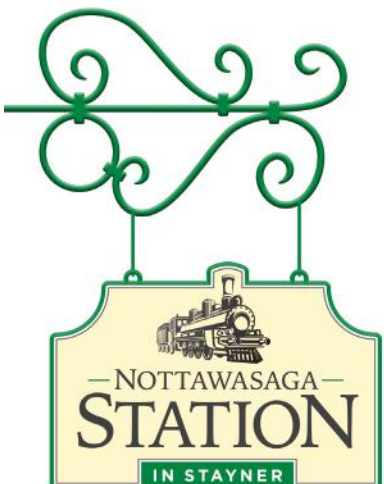
MAIN FLOOR  
Elevation C



PARTIALLY FINISHED  
BASEMENT  
Elevation A, B & C



FULLY FINISHED  
BASEMENT  
Elevation A, B & C



[MyNextStop.ca](http://MyNextStop.ca)

