

THE FRONTENAC

4 OR 5 BEDROOM

2,310 SQ. FT. INCLUDES 693 SQ.FT. PARTIALLY FINISHED BASEMENT
2,937 SQ. FT. INCLUDES 1,320 SQ.FT. FULLY FINISHED BASEMENT



Elevation A - 2,310 - 2,937 sq. ft.



mynextstop.ca | macphersonbuilders.com

THE FRONTENAC

4 OR 5 BEDROOM

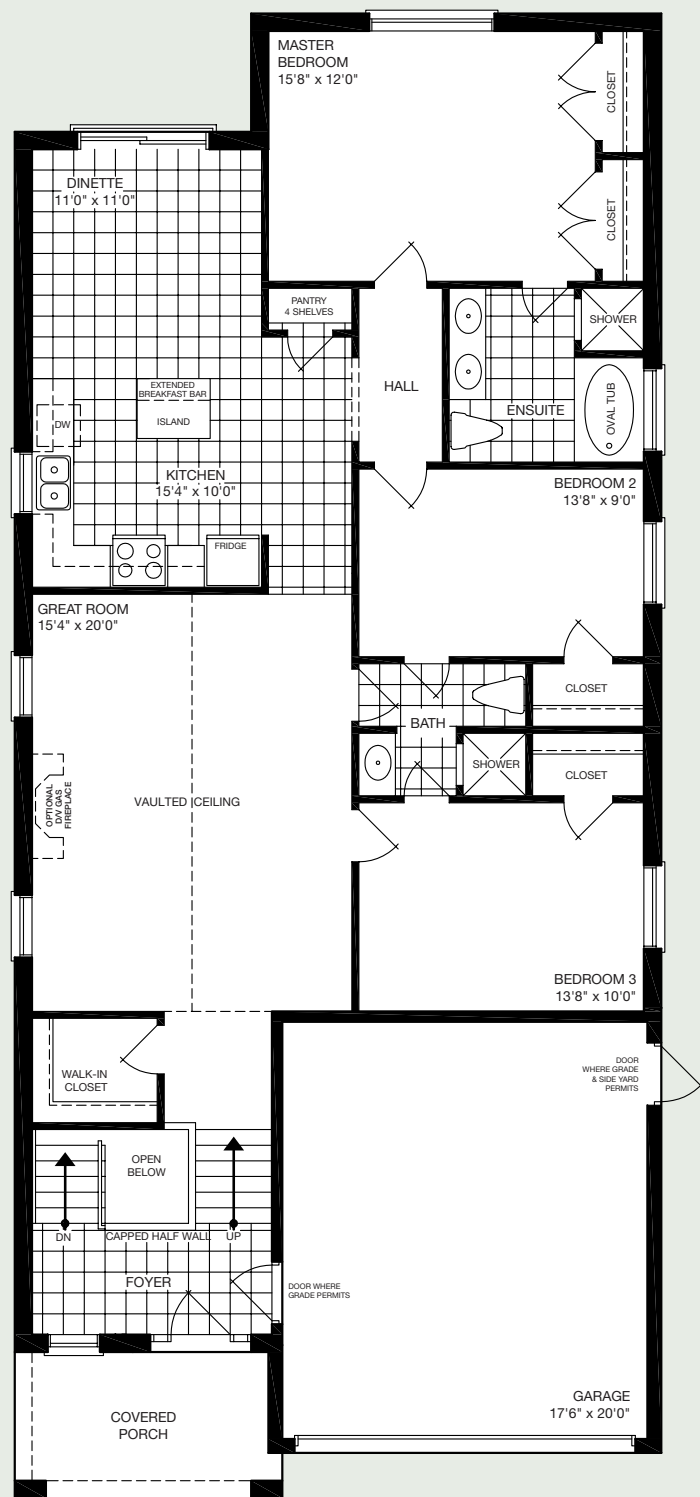
2,310 SQ. FT. INCLUDES 693 SQ. FT. PARTIALLY FINISHED BASEMENT
2,937 SQ. FT. INCLUDES 1,320 SQ. FT. FULLY FINISHED BASEMENT



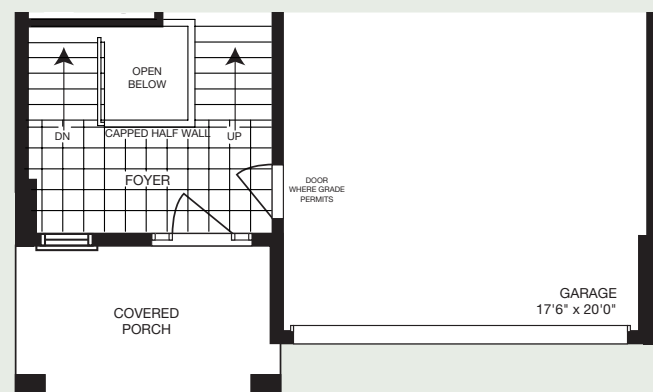
Elevation B - 2,310 - 2,937 sq. ft.



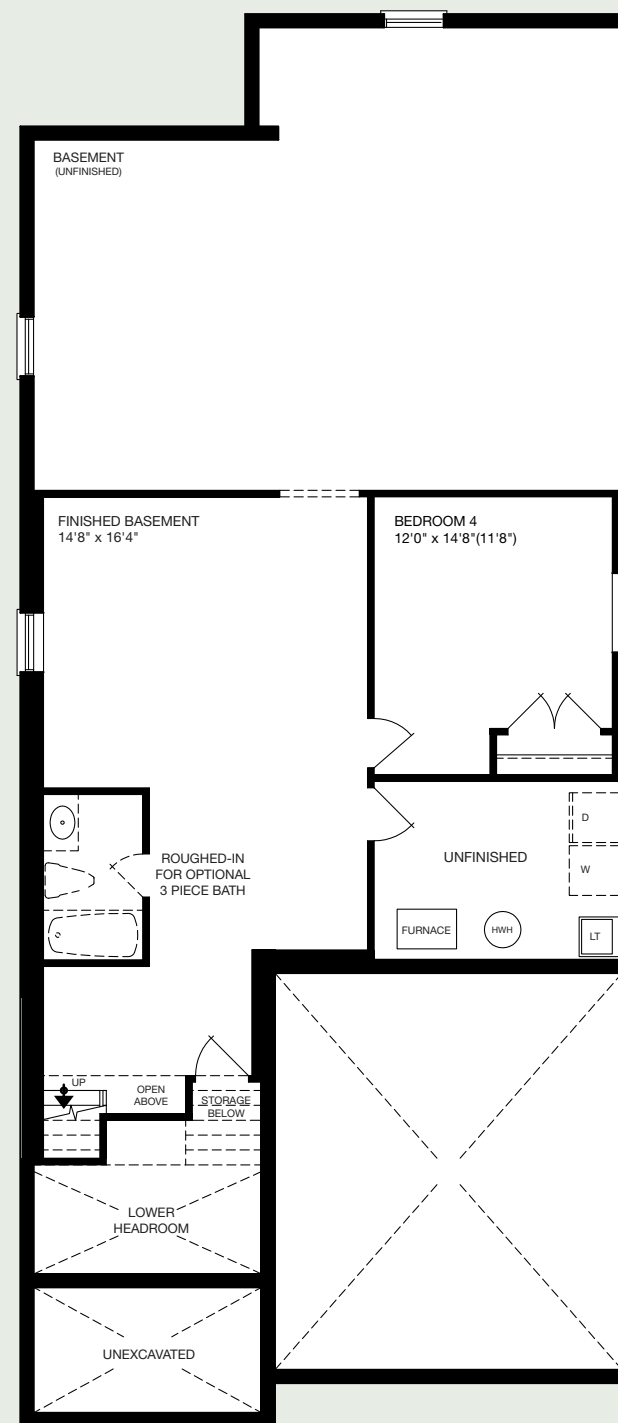
Elevation C - 2,310 - 2,937 sq. ft.



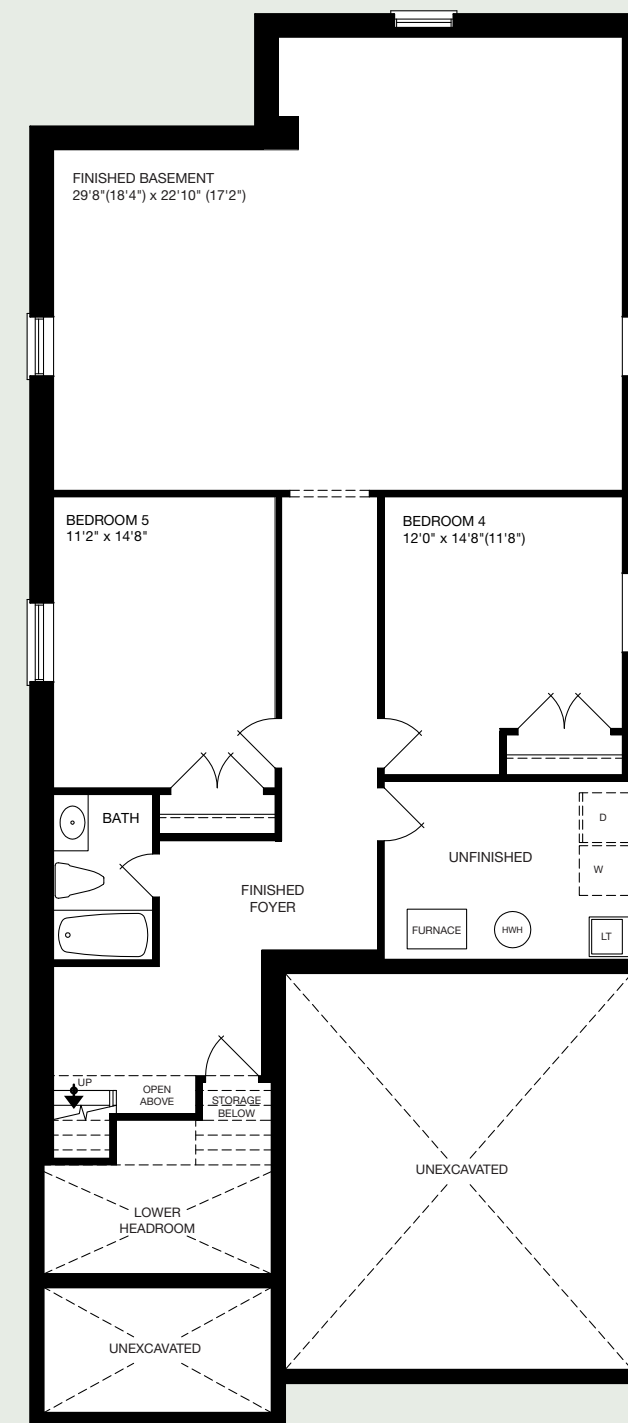
MAIN FLOOR
Elevation A & B



MAIN FLOOR
Elevation C



PARTIALLY FINISHED
BASEMENT
Elevation A, B & C



FULLY FINISHED
BASEMENT
Elevation A, B & C

