

# THE CHAMPLAIN

4 OR 5 BEDROOM

- 1,758 SQ. FT. INCLUDES 248 SQ.FT. PARTIALLY FINISHED BASEMENT
- 2,721 SQ. FT. INCLUDES 1,211 SQ.FT. FULLY FINISHED BASEMENT



[mynextstop.ca](http://mynextstop.ca) | [macphersonbuilders.com](http://macphersonbuilders.com)

Elevation B - 1,758 - 2,721 sq. ft.



# THE CHAMPLAIN

4 OR 5 BEDROOM

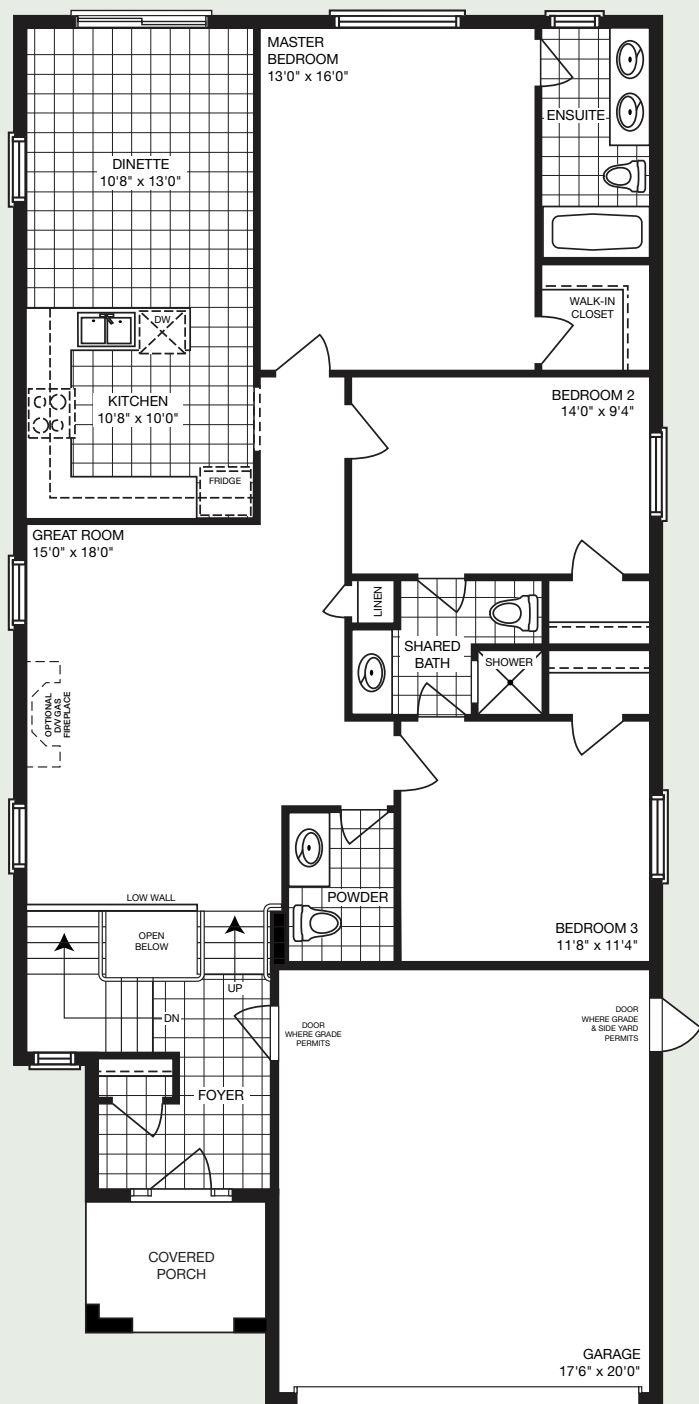
1,758 sq. ft. INCLUDES 248 sq. ft. PARTIALLY FINISHED BASEMENT  
2,721 sq. ft. INCLUDES 1,211 sq. ft. FULLY FINISHED BASEMENT



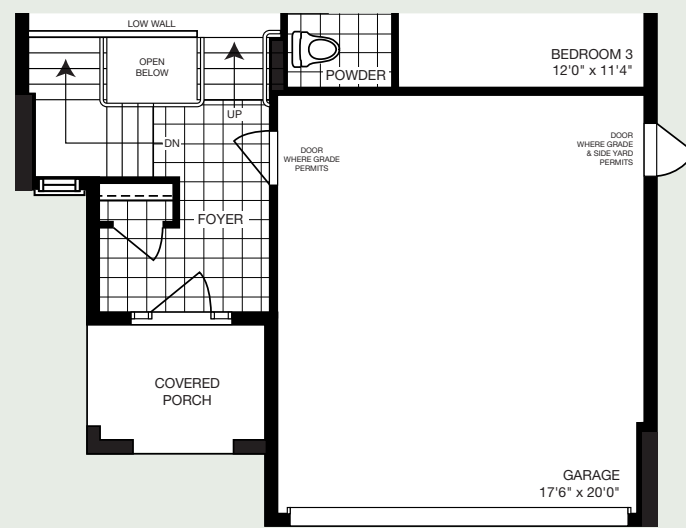
Elevation A - 1,758 - 2,721 sq. ft.



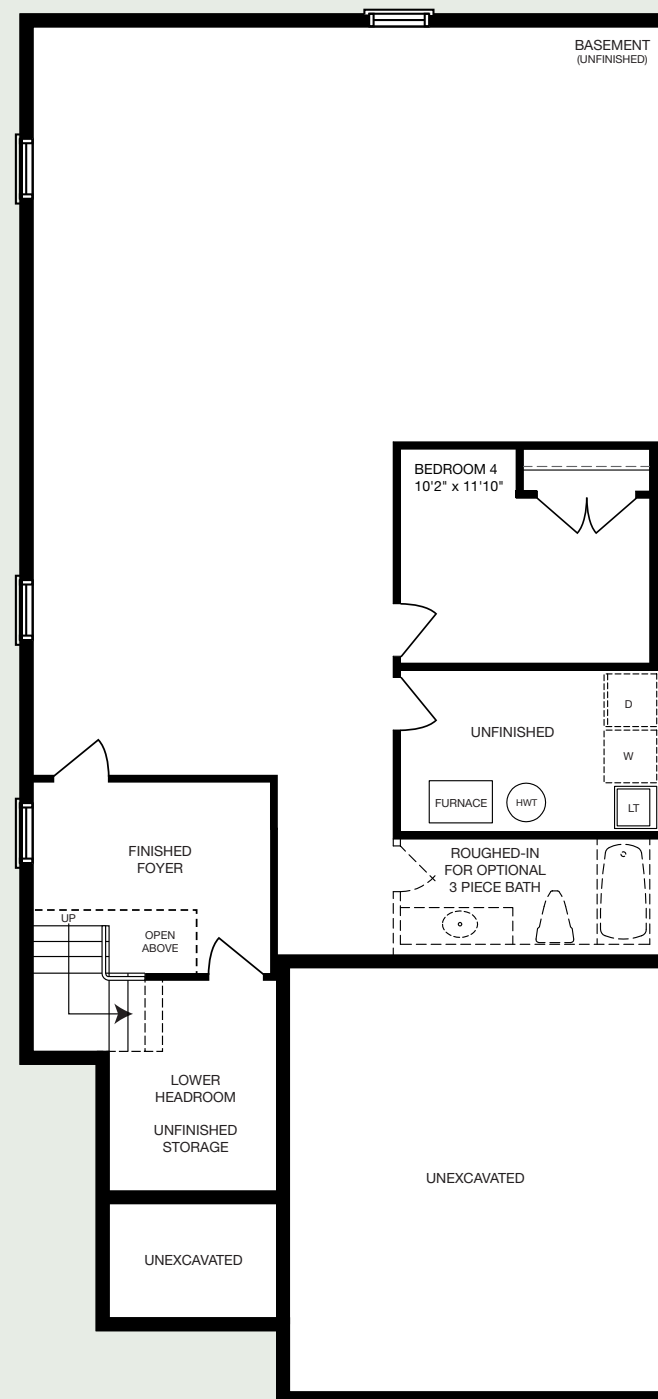
Elevation C - 1,758 - 2,721 sq. ft.



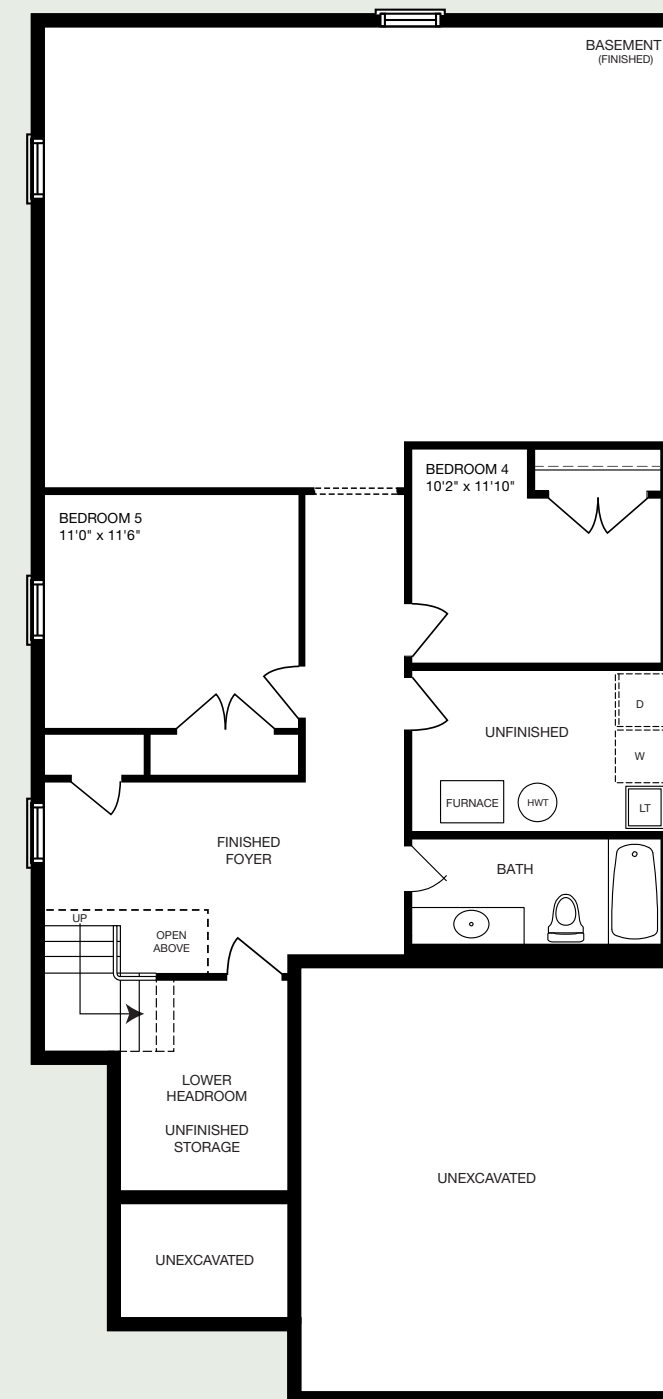
MAIN FLOOR  
Elevation A & B



MAIN FLOOR  
Elevation C



PARTIALLY FINISHED  
BASEMENT  
Elevation A, B & C



FULLY FINISHED  
BASEMENT  
Elevation A, B & C

All dimensions are approximate and subject to change without notice. Dimensions are in feet and may vary between elevations. Please see sales representative for details. E. & O. E.

