

THE BESSBOROUGH

2 OR 3 BEDROOM

1,876 SQ. FT.
2,599 SQ. FT. WITH LOFT
INCLUDES 112 SQ. FT. FINISHED BASEMENT AREA



Elevation A with Loft - 2,599 sq. ft.



Elevation A - 1,876sq. ft.



THE BESSBOROUGH

2 OR 3 BEDROOM

1,876 SQ. FT.
2,599 SQ. FT. WITH LOFT
INCLUDES 112 SQ. FT. FINISHED BASEMENT AREA



Elevation B - 1,876 sq. FT.



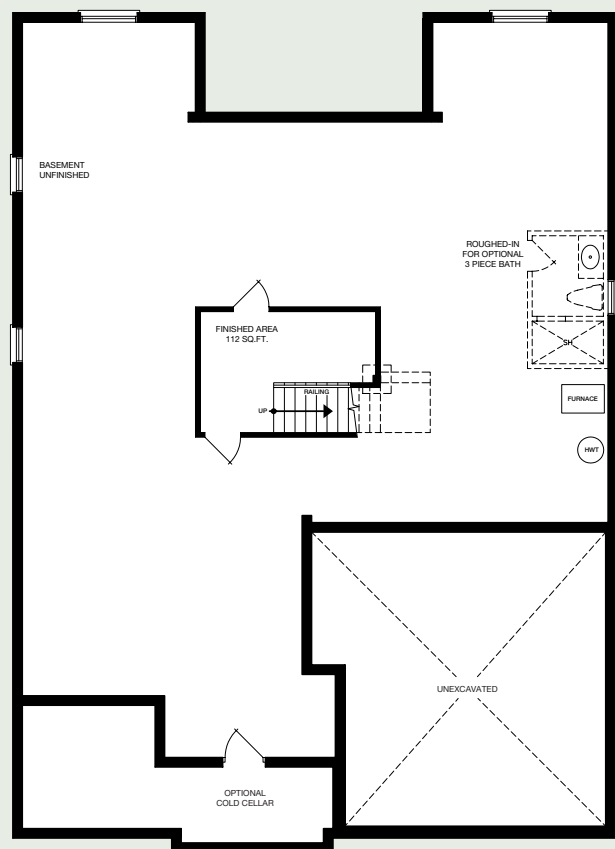
Elevation B with Loft - 2,599 sq. FT.



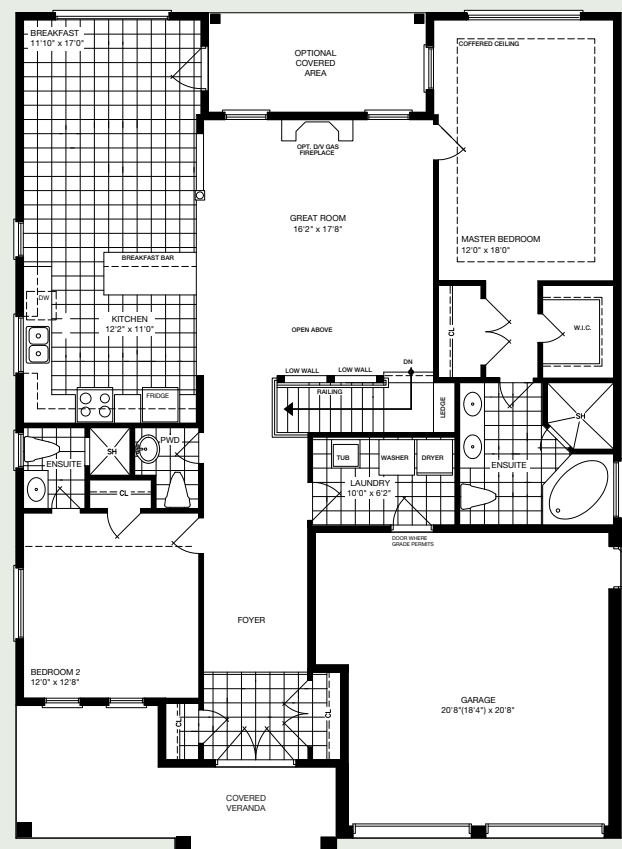
Elevation C - 1,758 sq. FT.



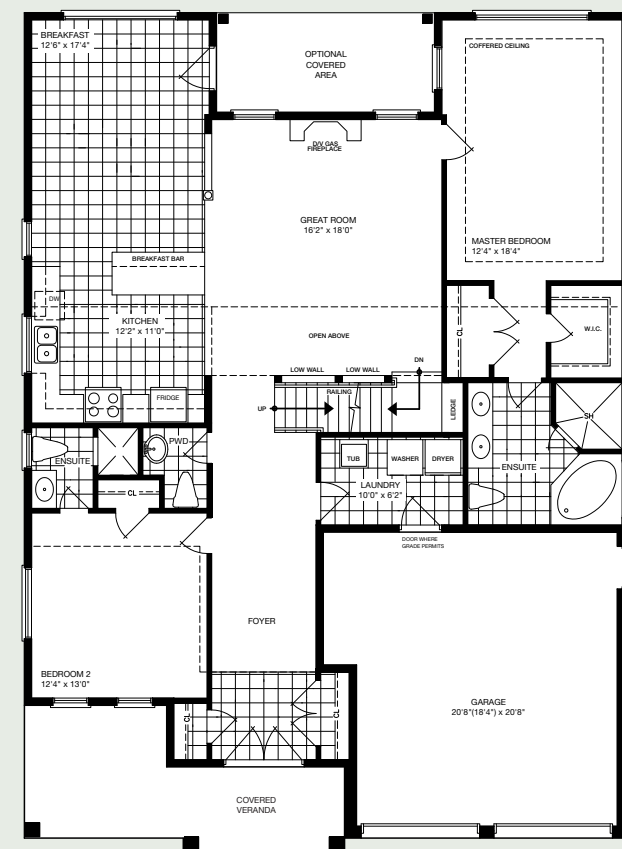
Elevation C with Loft - 2,599 sq. FT.



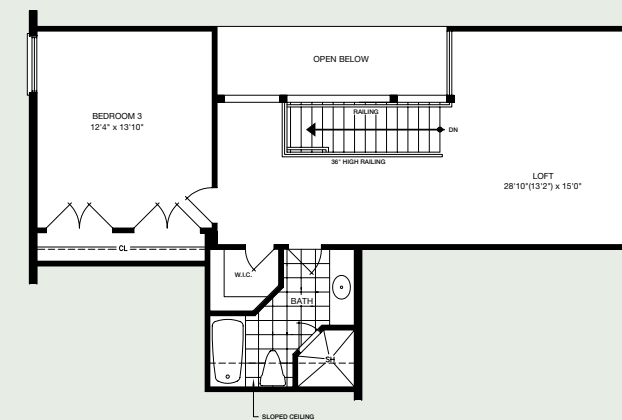
BASEMENT
Elevation A, B & C



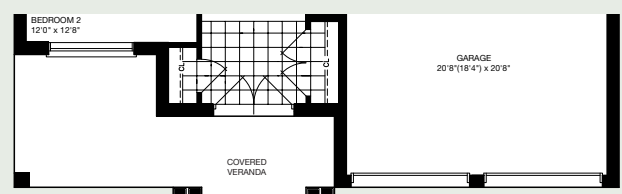
MAIN FLOOR
Elevation A



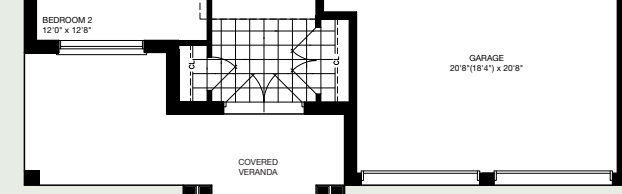
MAIN FLOOR OPT. LOFT
Elevation A



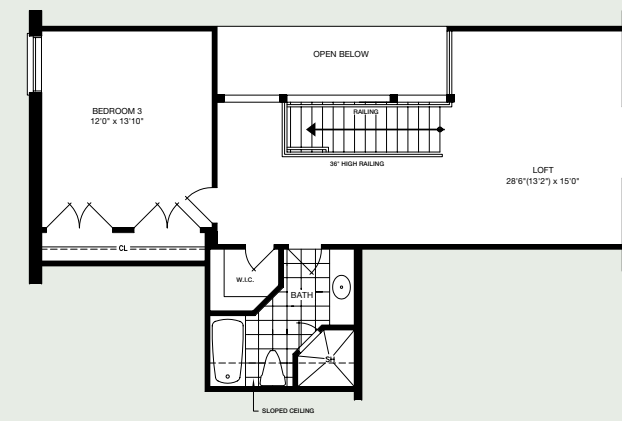
OPTIONAL LOFT
Elevation A & C



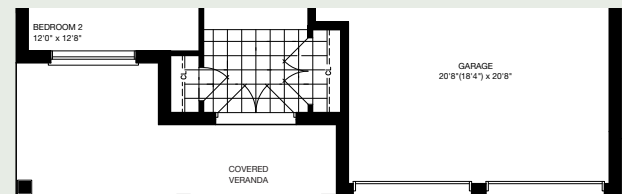
MAIN FLOOR
Elevation B



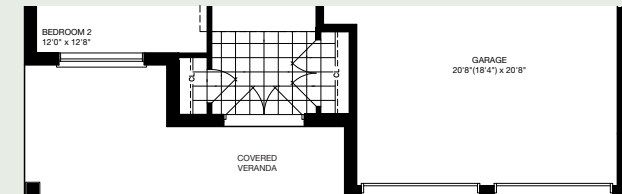
MAIN FLOOR OPT. LOFT
Elevation B



OPTIONAL LOFT
Elevation B



MAIN FLOOR
Elevation C



MAIN FLOOR OPT. LOFT
Elevation C

All dimensions are approximate and subject to change without notice. Dimensions are in feet and may vary between elevations. Please see sales representative for details. E. & O. E.

